

Create a Taniwaha Scene

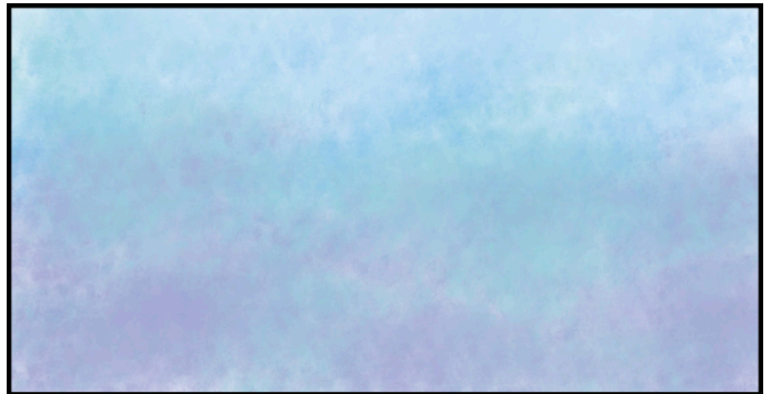
Note for teachers: the shapes provided are based on shapes from the Hī Hā taniwaha. Tamariki will enjoy spotting them! You may wish to print them on cardboard and cut them out for tamariki to trace around.

Step 1. Before You Start

Think about where your taniwaha lives: in the sea, the bush, a lake, a cave, or somewhere else? What kind of colours does that place have? Is it dark or light? Warm or cold? The colours you choose can create different feelings, e.g. red and yellow are warm, blue and green are cold, brown can be earthy or dark. Try to use no more than three or four colours, or it can get muddy.

Step 2. Paint Dye on Paper

Paint your colours onto the paper. Try doing straight lines like trees, wavy lines like water, splotches like rocks, or make something up. Dye is very runny, so this won't be neat, but that's the fun of dye!



Step 3. Add Details

Once the dye has dried, add some details. If your taniwaha lives in the ocean, you might have seaweed or fish. The bush might have ferns and trees, and a cave might have rocks or stalagmites and stalactites. How many objects will there be: one, two, three or more?



Copy the given shapes, or place and trace around them to make your objects – can you spot these same shapes on the Hī Hā taniwaha? You can put together more than one shape to make an object, or just make up your own!

Step 4. Colour it in!

Which colours will you choose? They don't have to be realistic. Do you want them to blend into your background? Then use similar colours. Stand out? Use different colours! Do you want them to feel hot or cold, dark or light?

Step 5. Choose your taniwha!

Colour and cut out the Hī Hā taniwha OR draw your own on paper with the shapes you used for the background OR make up a new one! Think about where your taniwha lives and how it might have adapted to its environment, e.g. webbed toes for swimming, hard scales to protect against rocks, sharp claws to climb trees. How many claws might it have? How many teeth?

Is your taniwha fierce, or is it a *kaitiaki*, a guardian? Does it blend in with the background, or stand out? For example, red would stand out and be angry, blue might blend in and be calm.

If you are making the background for a box theatre, you're done! *Ka rawe!* If you want to make a taniwha drawing instead, glue your taniwha onto your background. *Ta' da!*

